

# BALLINGER

## MAIN DETAILS

**Builder:** Thomas Bantock

**Fitter:** Brinklow Boat Services

**Year:** 1895

**Style:** Tug Style

**Length:** 57ft 9ins

**Steel thickness:** 6 / 6 / 4

**Boat Safety:** Nov '26



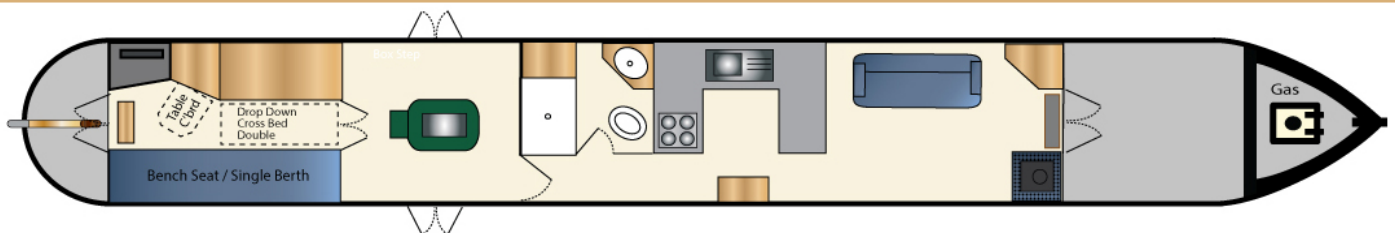
## SUMMARY

Ballinger is a 57'9" Historic Traditional Narrowboat, originally built in 1895 by Bantock Bros. Ballinger was built as a joey boat for use on the BCN. In its current form it was converted by Max Sinclair in the 1960's. The fitout was undertaken by Ken Brenchley, who at the time was working at Brinklow Boat Services and the traditional decoration is by Phil Speight.

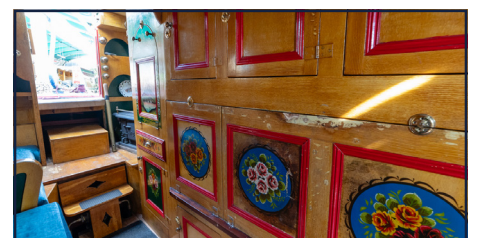
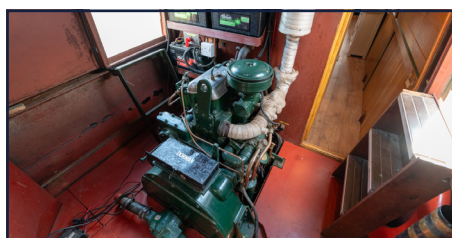
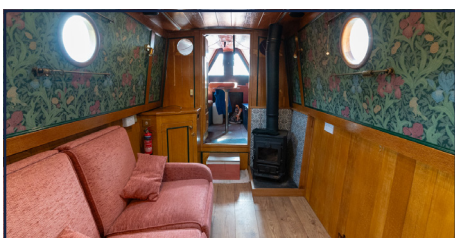
Much steelwork has taken place in recent years and the hull is in excellent order given the age of the craft.

**Lying:** Glascote Basin, Coventry Canal

## LAYOUT



## ACCOMMODATION



## DIMENSIONS

<b>Well deck:</b>	7' 0"
<b>Saloon:</b>	9'0"
<b>Galley:</b>	7' 3"
<b>Bathroom:</b>	5' 7"
<b>Engine Room:</b>	6' 0"
<b>Back Cabin:</b>	10' 0"
<b>Stern deck:</b>	3' 6"
<b>Headroom:</b>	6' 2"
<b>Draught:</b>	2' 6"

## PROPULSION

<b>Engine:</b>	Dorman 2LB
<b>Gearbox:</b>	Hydraulic Drive
<b>Controls:</b>	Traditional Controls

## HEATING & WATER

<b>Tank:</b>	100gal stainless tank
<b>Stove:</b>	Morso Squirrel solid fuel stove in saloon & Premier solid fuel range in back cabin
<b>Hot water:</b>	Morco gas water heater

## POWER

<b>Alternators:</b>	Single alternator with split charger
<b>Batteries:</b>	1 No.Starter/ 2No. Domestic 100Ah
<b>Charger:</b>	20A battery charger
<b>Gas:</b>	2 x 13kg gas bottles in bow locker
<b>Solar:</b>	Flexible solar panels and solar controller
<b>230v:</b>	230v available when plugged in to 16A supply

## CABIN FIT OUT

<b>Insulation:</b>	Polystyrene
<b>Ballast:</b>	Assumed concrete slab
<b>Ceiling:</b>	Traditionally grained T&G cladding
<b>Cabin sides:</b>	Traditionally grained T&G cladding & wall paper in saloon
<b>Hull side:</b>	Traditionally grained T&G cladding
<b>Flooring:</b>	Laminate flooring throughout
<b>Side doors:</b>	Side doors starboard & port side in saloon
<b>Windows:</b>	Brass portholes throughout
<b>Seating:</b>	Freestanding sofa in saloon
<b>Cooking:</b>	Gas hob, oven and grill
<b>Fridge:</b>	12v fridge
<b>Worktops:</b>	Tiled worktops
<b>WC:</b>	Thetford cassette toilet
<b>Shower:</b>	Tiled shower unit with bi-fold doors
<b>Berths:</b>	Double cross bed in back cabin

## MAINTENANCE

<b>Last blacked:</b>	January '22 in 2-pack
<b>Anodes:</b>	4 x 2.8kg fitted in Jan '22
<b>Engine:</b>	At regular intervals

## NAVIGATION EQUIPMENT

Full cruising kit included in sale:

- Mooring lines
- Windlasses
- Mooring equipment, anchor, etc.

## EXTERIOR

- Tug deck
- Traditional decoration
- Riveted hull