

NORTON CANES BOAT SALES

XEBEC

MAIN DETAILS

Builder: Converted BCN Day Boat

Fitter: Caggy's Yard

Year: 1900's

Style: Tug Style

Length: 65ft

Steel thickness: 6 / 6 / 4

Boat Safety: Nov '27



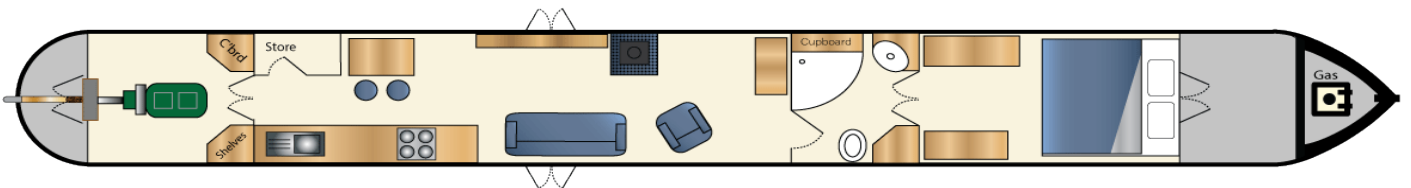
SUMMARY

Xebec is a 65ft Tug Style Narrowboat full of character with a very interesting history. Originally a BCN day boat, she was converted at Caggy's yard in Tipton to a powered leisure craft with the addition of a motors stern and a Ruston and Hornsby 2VSH engine.

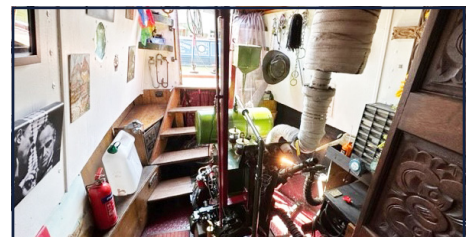
Xebec is a well laid out boat, ideal for use as a liveaboard. The boat has a survey, which is available to view and has had the steelworks undertaken on the hull, which were highlighted on the survey.

Lying: Glascote Basin, Coventry Canal

LAYOUT



ACCOMMODATION



DIMENSIONS

Tug deck:	8' 0"
Saloon:	15'0"
Galley:	8' 0"
Bathroom:	5' 0"
Bedroom:	13' 0"
Engine Room:	8' 6"
Stern deck:	3' 6"
Internal headroom:	6' 2"
Draught:	2' 6"

PROPULSION

Engine:	Ruston & Hornsby 2VSH
Controls:	Traditional Controls
Other Info:	Spares available to purchase from owner by separate negotiation

HEATING & WATER

Tank and capacity:	150gal stainless tank
Stove:	Stovax solid fuel stove
Central heating:	Back boiler from solid fuel stove
Hot water:	Gas water heater

POWER

Alternators:	Single alternator with split charger
Batteries:	1 No.Starter/ 3No. Domestic 110Ah
Inverter/charger:	2.5kW Inverter and Sterling Battery Charger
Gas:	2 x 13kg gas bottles in bow locker
Solar:	Solar panel and solar controller

CABIN FIT OUT

Insulation:	Assumed rockwool and polystyrene
Ballast:	Assumed concrete slab
Ceiling:	Painted ply
Cabin sides:	Painted ply
Hull side:	Pine T&G
Flooring:	Solid wood flooring throughout
Side doors:	Side doors starboard & port side in saloon
Windows:	Brass portholes throughout
Seating:	Freestanding sofa in saloon
Cooking:	Gas hob, oven and grille
Fridge:	12v fridge
Worktops:	Wooden worktops
WC:	Pumpout toilet
Shower:	Quadrant shower unit with sliding doors
Berths:	Fixed king size bed

MAINTENANCE

Last blacked:	October 2023
Anodes:	4 x 2.8kg fitted in Oct '22
Engine serviced:	June 2023
Survey:	Surveyed in 2022

NAVIGATION EQUIPMENT

Full cruising kit included in sale:

- Mooring lines
- Windlasses
- Mooring equipment, anchor, etc.

EXTERIOR

- Tug deck
- Traditional decoration
- Riveted hull