

NORTON CANES BOAT SALES

TUCO

MAIN DETAILS

Builder: DCR Boatbuilding

Fitter: Rex Wain

Year: 2021

Style: Tug

Length: 60ft

Steel thickness: 10 / 6 / 5 / 4

Boat Safety: Unregistered



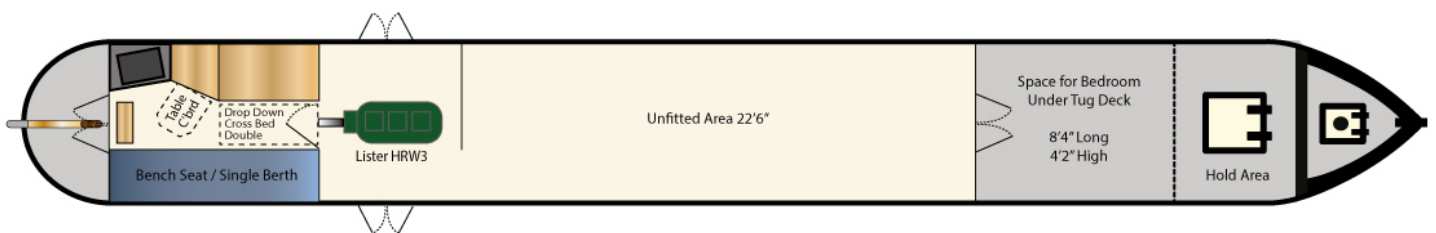
SUMMARY

Tuco is a stunning new build 60ft Tug Style Narrowboat, which was built by Dave Ross of Brinklow Boat Services in the style of a W.J. Yarwoods, Cowburn and Cowpar boat. Tuco is offered in the form of a 'sailaway' with the back cabin being fitted by Rex Wain and a Lister HRW3, which was rebuilt by Dave Ross, being housed in the engine room. The main accommodation has been sprayfoamed and is awaiting a fit out.

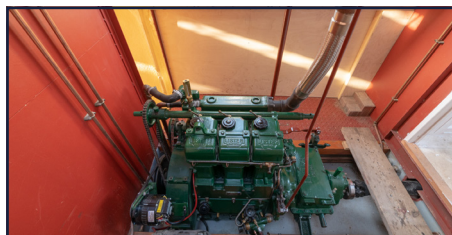
This a truly unique boat, which has been built to the highest quality and must be viewed to be fully appreciated.

Lying: Stretton Arm, North Oxford Canal

LAYOUT



ACCOMMODATION



DIMENSIONS

Fore deck:	5'6"
Tug deck:	13'6"
Hold:	5'6"
Under Tug Deck:	8' 4"
Unfitted Cabin:	22'9"
Engine room:	6'0"
Back Cabin:	8'6"
Stern deck:	3'6"
Internal headroom:	6'5"
Draught:	2'7"

PROPULSION

Engine:	Lister HRW3
Hours:	TBC
Transmission:	Lister Blackstone gearbox
Fuel tank:	Integral propulsion diesel tank in engine room
Weedhatch:	Yes

HEATING & WATER

Tank and capacity:	Stainless steel water tank under tug deck
Stove:	Class1C solid fuel range in back cabin
Central heating:	Integral diesel tank under floor in back cabin

POWER

Alternators:	Leece Neville alternator charges starter battery
Batteries:	12v starter battery
Lighting:	Wiring for lighting in back cabin
Gas:	Gas locker in bow

CABIN FIT OUT

Insulation:	Sprayfoam
Ballast:	Brick
Flooring:	25mm Marine ply
Windows:	Brass portholes throughout
Hatches:	3No. Houdini hatches in accommodation cabin
Berths:	Back cabin cross bed double berth

MAINTENANCE

Last blacked:	Built using blasted and primed plate and coated in 2-pack epoxy blacking
Anodes:	4 x 2.8kg
Engine serviced:	Rebuilt by Dave Ross

NAVIGATION EQUIPMENT

Full cruising kit included in sale:

- Mooring lines
- Tiller bar

EXTERIOR

- Pigeon box
- Wooden hatches